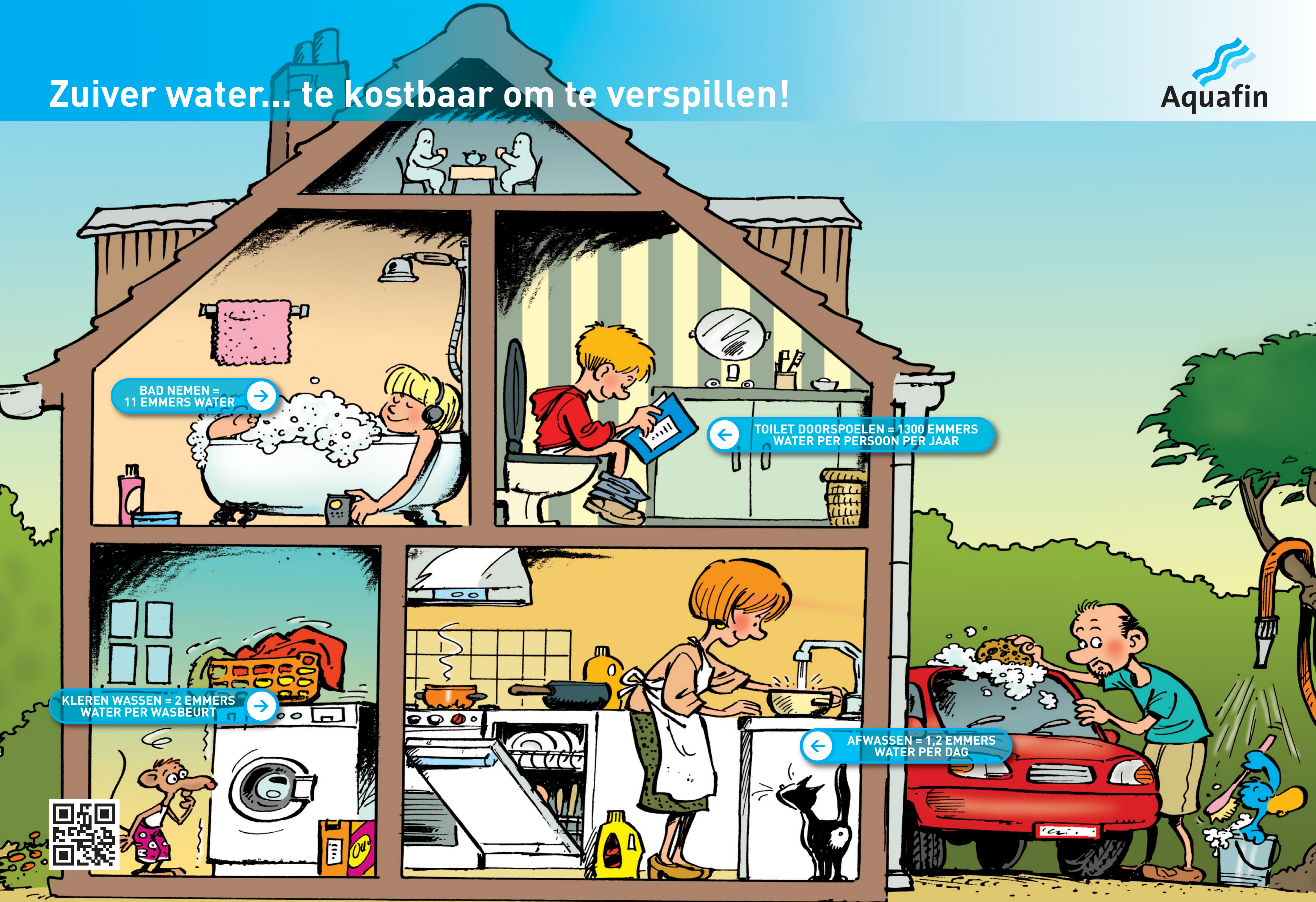


Zuiver water... te kostbaar om te verspillen!



BAD NEMEN =
11 EMMERS WATER



TOILET DOORspoelen = 1300 EMMERS
WATER PER PERSOON PER JAAR

KLEREN WASSEN = 2 EMMERS
WATER PER WASBEURT



AFWASSEN = 1,2 EMMERS
WATER PER DAG

